

LEADERS IN OUTDOOR CINEMA



PARKS & REC EVENT PROFESSIONALS

2025

PRODUCT CATALOG

EPICOUTDOORCINEMA.COM



WELCOME TO OUR EPIC Product Catalog

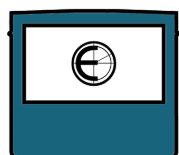
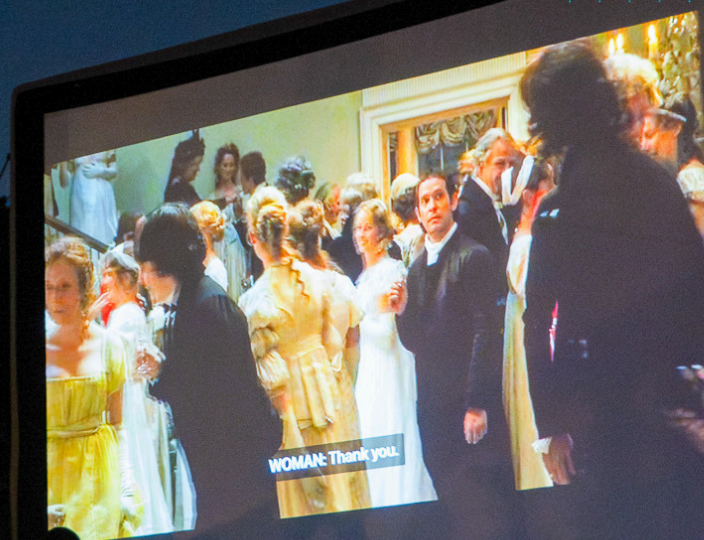
Since 2008, EPIC Outdoor Cinema has been the leading innovator of portable, sealed-air Insta-flated, self-supporting, cinema screen systems in the industry.

Over the years, EPIC has established a reputation of delivering high quality inflatable cinema screens with excellent customer service and support. We are committed to serve your needs with the latest technological innovations, products, and team experience providing a complete, integrated solution.

Above all, EPIC's unique SlimLine screens and complete cinema ShowCase Audio-Visual Console systems are preferred by commercial, corporate, and recreational clients around the world! As a market leader, EPIC offers diverse solutions for the hospitality, education, and government markets, because of our emphasis on creating EPIC experiences!

Epic Outdoor Cinema's professional SlimLine PopUp screens and complete cinema systems, are designed for quiet operation and ease of use. With over a decade at the forefront of the industry, our innovative solutions convert open spaces into dynamic movie theaters, offering eco-conscious and versatile options ranging from 9ft to 40ft wide.

Engineered for durability and ease of use, our products are the key to hosting unforgettable evenings brimming with laughter, suspense, and wonder. We make ordering a complete system easy by including all components from the electronics to extension cords and even protection for storage and system transport.



SILENT CINEMA SCREENS - ECO FRIENDLY!

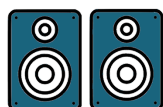
Screen sizes from 150" to 40 feet wide

Front/Rear Projection & Machine-Washable Zip-on Screen



LASER VIDEO PROJECTORS - PREMIUM VIDEO!

We offer the latest models of LASER projectors which have the brightest images, so you can start the movie even earlier, and offer virtually no maintenance!



RIVETING SOUND SYSTEMS

Our ShowCase Audio Visual Consoles and Sound Systems are sure to impress your guests!



GO EPIC!

THE ULTIMATE CHOICE
FOR PERFORMANCE
& QUALITY!



EPIC'S Screen-Only Kits

EPIC Screen-Only Kits include all accessories for a screen setup, you provide the A/V.

PRO series w/Two Yr Warranty

| | |
|--------|------------|
| E-SL 9 | 9 ft wide |
| E-SL12 | 12 ft wide |
| E-SL16 | 16 ft wide |
| E-SL20 | 20 ft wide |

PREMIER series w/Three Yr Warranty

| | |
|---------|------------|
| E-SLP16 | 16 ft wide |
| E-SLP20 | 20 ft wide |
| E-SLP25 | 25 ft wide |
| E-SLP30 | 30 ft wide |
| E-SLP40 | 40 ft wide |

**SCAN
QR CODE
FOR CURRENT
SCREEN PRICING**



FREE CUSTOM LOGO



For a limited time, we are offering a **complimentary custom logo directly on to the screen's lower skirt** at time of purchase, normally a \$417 upgrade.

Shipping, Sales Tax, and Duty not included

PRO, PREMIER SCREENS FEATURE:

- DualVista™ (front/rear projection) machine-washable flexible projection surface.
- Uses Quik-Zip™ attachment method to secure surface to frame.
- Free-standing design with integrated rear support legs
- Hot-air welded, triple-reinforced seams for an airtight sealed-air frame. Silent ECO Operation
- Rubberized protection on the base.
- Carry handles on frame for easy placement
- Heavy-duty carry bag, compact storage
- Hands-free inflation with reversible pump to quickly inflate then deflate after use
- Capable of up to 25mph winds! Add a Mesh DualVista™ machine-washable front/rear projection surface for tougher conditions!
- NFPA 701 Fire Compliant, IFR surfaces
- Pressure relief valve protects from over inflating frame
- Proprietary fabrication method produces true aspect ratio without distortion



PRO SCREENS

DESCRIPTION & SPECIFICATION

SCAN QR CODE
FOR CURRENT
SCREEN PRICING



EPIC PRO Projection Screens contain an EPIC Slimline™ Sealed-Air Inflatable Frame, with integrated, back supports built-in for a virtually hands free inflation, padded handles for easy placement, a Widescreen HD format with Dual-Vista™ projection, non-skid protection points on the base, a Quik-Zip™ machine washable quality screen surface, and an integrated lower skirt. Optional interchangeable screen surfaces include HD vinyl (Front or Rear), Mesh for high wind use, 3D.

- NFPA 701 compliant
- IFR certified
- 700 Denier triple-seamed reinforced PVC frame
- Non-skid reinforced ground contact points on frame's base
- Stable in up to 25 mph winds

STANDARD SCREEN SURFACE (Included):

A breakthrough heavyweight stretched seamless projection textile material capable of front or rear projection. Machine-Washable. Flame Retardant. Versatile and sturdy, and an excellent projection surface. **High Gain of 0.85* at 75° viewing angle.** Removable screen surface yields minimal stretching in wind and stays wrinkle-free.

COLOR: Glacier White

CLEANING, STORAGE & USE:

- Ensure laundering machinery is free of burrs or sharp objects that can cause snagging.
- Wash separately. Do not combine with other products (i.e. towels, sheets, drapery, etc.)
- Machine wash, cold
- Use non-chlorine bleach if needed. Best to test first. Oxy-clean is the best option.
- Do not use any fabric softeners
- Dry on LOW HEAT, or hang and stretch out to air dry. Direct fans at fabric to speed drying.
- Do not store screen surface damp or wet, always hang and stretch out to air dry or tumble on low heat.
- Warning: Remove screen surface if heavy rain/wind is approaching. Prolonged exposure to high wind on a heavy wet-soaked surface may cause irreversible stretching.

*Gain when using Front Projection.

MARINE-GRADE BLACK BORDER & SKIRT:

Marine-grade all weather oxford canvas material with repellant backing provides a smooth yet durable finish. The water-repellant fabric exhibits high tensile and tear strength. 1000-Denier Polyester. Certified flame resistant.

COLOR: Deep Black

CUSTOM LOGO OPTION: EPIC has an easy solution to your branding needs. Every PRO screen purchased directly through us or from our website: epicoutdoorcinema.com, receives a professional **FREE LOGO** printed in white placed directly in the center on the lower black skirt - only available when requested at time of purchase, prior to shipping. Allow 3 to 5 days for processing artwork.

Looking for more branding or banner display options? Design a full panel banner for sponsors or special event logos: Use your screen's frame - during the day - and have a custom zip-in 4-color printed banner made, which is put in place of the white projection surface. The zip-in banner we provide is a durable outdoor printed textile banner to allow you to use your frame as an EPIC Sign! Once printed, we custom cut the printed banner and sew zippers around the edges, in-house, for easy attachment to frame's black border.

OPTIONAL SCREEN SURFACES:

VINYL FRONT: Front Projection vinyl, matte white front side with a black backing on reverse, allows 100% of projector light to bounce back to the audience and eliminates lights behind the screen from penetrating through and excellent HD Resolutions. High Gain of 0.95 with an excellent 75° viewing angle.

VINYL REAR: Rear Projection gray vinyl, high contrast premium projection screen helps to eliminate ambient light, and excellent HD Resolutions. High Gain of 0.92 with a 55° viewing angle.

MESH: The bright white fabric has wind perforations for outdoor use, capable of Front or Rear Projection and machine washable. Perfect for high wind situations allowing some wind to pass through material while still preserving excellent image quality. Gain of 0.85 at center with a 75° viewing angle.



MACHINE WASHABLE SURFACE



FLAME RETARDANT



FRONT / REAR PROJECTION



NO CONTINUOUS BLOWER



PREMIER SCREENS

DESCRIPTION & SPECIFICATION

SCAN QR CODE
FOR CURRENT
SCREEN PRICING



EPIC PREMIER Projection Screens contain an EPIC Slimline™ Sealed-Air Inflatable Frame, with integrated, back supports built-in for a virtually hands-free inflation, padded handles for easy placement, non-skid protection around the entire base, a Quik-Zip™ machine washable higher quality screen surface, and an integrated lower skirt. Optional interchangeable screen surfaces include HD vinyl (Front or Rear), Mesh for high wind use, 3D.

- NFPA 701 compliant
- IFR certified
- 700 Denier triple-seamed reinforced PVC frame
- Reinforced non-skid protection on the frame's entire base
- Stable in up to 25 mph winds

PREMIER SCREEN SURFACE (Included):

Our flagship and highest-quality heavyweight solid seamless coated projection textile material capable of front or rear projection. Machine-Washable. Flame Retardant. Versatile and sturdy, and an excellent projection surface. **Highest Gain of 1.01*** at **175°+ viewing angle**. Removable screen surface yields no stretching in wind and stays wrinkle-free.

COLOR: Arctic White

CLEANING, STORAGE & USE:

- Ensure laundering machinery is free of burrs or sharp objects that can cause snagging.
- Wash separately. Do not combine with other products (i.e. towels, sheets, drapery, etc.)
- Do not overload machinery
- Machine wash, cold
- Use non-chlorine bleach if needed. Best to test first. Oxy-clean is the best option.
- Dry on LOW HEAT, or hang and stretch out to air dry. Direct fans at fabric to speed drying.
- Do not store screen surface damp or wet, always hang and stretch out to air dry or tumble on low heat.
- Warning: Remove screen surface if heavy rain/wind is approaching. Prolonged exposure to high wind on a heavy wet-soaked surface may cause irreversible stretching.

* Gain when using Front Projection.

PREMIUM BLACK NEOPRENE BORDER & SKIRT:

Superior quality all weather neoprene "wet-suit" material with smooth flat black yet durable finish. Neoprene is highly resistant to heat, chemicals, UV light, fats, and oils and remains stable and flexible over a wide range of temperatures, from -40°C (-40°F) to 120°C (248°F). Certified flame resistant.

COLOR: Dark Charcoal Black

CUSTOM LOGO OPTION: EPIC has an easy solution to your branding needs. Every PREMIER screen purchased directly through us or from our website: epicoutdoorcinema.com, receives a professional **FREE LOGO** printed in white placed directly in the center on the lower black skirt - only available when requested at time of purchase, prior to shipping. Allow 3 to 5 days for processing artwork.

Looking for more branding or banner display options? *Design a full panel banner for sponsors or special event logos:* Use your screen's frame - during the day - and have a custom zip-in 4-color printed banner made, which is put in place of the white projection surface. The zip-in banner we provide is a durable outdoor printed textile banner to allow you to use your frame as an EPIC Sign! Once printed, we custom cut the printed banner and sew zippers around the edges, in-house, for easy attachment to frame's black border.

OPTIONAL SCREEN SURFACES:

VINYL FRONT: Front Projection vinyl, matte white front side with a black backing on reverse, allows 100% of projector light to bounce back to the audience and eliminates lights behind the screen from penetrating through and excellent HD Resolutions.. High Gain of 0.95 with an excellent 75° viewing angle.

VINYL REAR: Rear Projection gray vinyl, high contrast premium projection screen helps to eliminate ambient light, and excellent HD Resolutions. High Gain of 0.92 with a 55° viewing angle.

MESH: The bright white fabric has wind perforations for outdoor use, capable of Front or Rear Projection and machine washable. Perfect for high wind situations allowing some wind to pass through material while still preserving excellent image quality. Gain of 0.85 at center with a 75° viewing angle.



SCREEN FLOATS ON H2O



MACHINE WASHABLE SURFACE



FLAME RETARDANT



FRONT / REAR PROJECTION



NO CONTINUOUS BLOWER



EPIC ACCESSORIES **SURFACES & MORE**

Explore Our Range of Optional Screen Surfaces for Unmatched Viewing Flexibility!

Enhance your outdoor cinema experience with our diverse selection of screen surfaces, designed to cater to every viewing environment. Among our offerings is the innovative MESH surface, meticulously crafted to allow air to pass through without compromising the quality of your picture. This feature is particularly ideal for windy conditions, ensuring that your entertainment is uninterrupted by the elements.

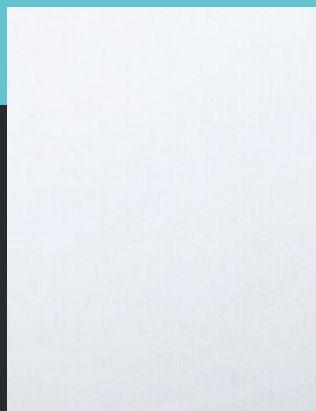
Whether you're looking for durability, ease of cleaning, or specific environmental accommodations, our replacement surfaces are available in several materials, including traditional vinyl for a classic look and advanced materials for high-definition projection. Each option is easy to attach with our Quick-Zip system, allowing for quick and effortless changes to suit any event or setting.

Choose the perfect surface for your screen and ensure a premium viewing experience, every time.





PROJECTION SCREEN SURFACE OPTIONS



PRO SCREEN WHITE DUAL-VISTA™ FRONT OR REAR PROJECTION

A heavyweight stretched seamless projection textile material capable of front or rear projection. Machine-Washable. Versatile and sturdy, and an excellent projection surface. Removable screen surface yields minimal stretching in wind and stays wrinkle-free.

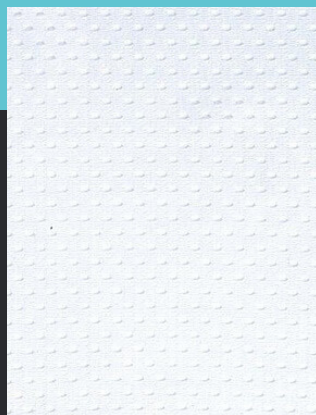
High Gain of 0.85* at 75° viewing angle.
IFR Non-Flammable



PREMIER SCREEN DUAL-VISTA™ FRONT OR REAR PROJECTION

Our flagship, highest-quality heavyweight solid seamless coated projection textile surface, front or rear projection capable and machine-Washable. Versatile, sturdy, excellent projection surface. Removable screen surface, no stretching in wind and stays wrinkle-free.

Highest Gain of 1.01* at 175°+ viewing angle.
IFR Non-Flammable



ARCTIC MESH WHITE FRONT OR REAR PROJECTION

Bright white fabric with wind perforations for outdoor use, capable of Front or Rear Projection and machine washable. Perfect for high wind scenarios, allows some wind to pass through while preserving image quality.

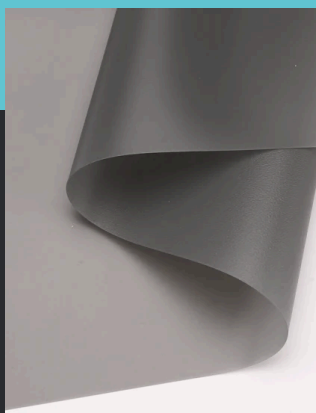
Gain of 0.85 at center with a 75° viewing angle.
IFR Non-Flammable



VINYL FRONT PROJECTION WHITE W/BLACK BACKING

This surface has a bright white front side with black backing on reverse, allows 100% of projector light to bounce back to the audience and eliminates lights behind the screen from penetrating. Excellent HD Resolutions.

High Gain of 0.95 with an excellent 75° viewing angle.
IFR Non-Flammable



VINYL REAR PROJECTION - GREY

Rear Projection Grey Vinyl, high contrast premium projection screen helps to eliminate ambient light, and excellent High Definition Resolutions.

High Gain of 0.92 with a 55° viewing angle.
IFR Non-Flammable



3D-PASSIVE SILVER VINYL FRONT PROJECTION

Front Projection 3-D passive silver Vinyl, high contrast premium projection screen helps to eliminate ambient light, and excellent 3D passive High Definition Resolutions.

Highest Gain of 1.2 with a 90° viewing angle.
IFR Non-Flammable



SCREEN MODEL COMPARISON

For Over A Decade, EPIC'S SlimLine™ Screens Have Been Leading The Industry
With Our Free-Standing & Completely Silent Sealed-Air Design.

You may notice that there is a price difference between the screen-only kits.
This comparison sheet is a tool to help you compare our PRO and PREMIER Model Screens.



| EPIC SCREEN-ONLY KITS | PRO | PREMIER |
|--|-------------------|--------------------|
| DualVista™ Machine-Washable Screen Surface | ✓ | ✓ |
| Sealed Air, Completely Silent Once Inflated | ✓ | ✓ |
| Quick, Easy Set-Up & Breakdown | ✓ | ✓ |
| Professional Grade, Free-Standing Design | ✓ | ✓ |
| Custom Branded Skirt for Screen Frame | ✓ | ✓ |
| Sleek Design that also Floats on Water | — | ✓ |
| Additional Tubing for Extra Rigidity | — | ✓ |
| Faster Setup & Breakdown w/Premium Pump | — | ✓ |
| Upgraded Neoprene Stretch Skirt & Border | — | ✓ |
| Upgraded Non-Stretch Dual Screen Surface | — | ✓ |
| Manufacturer's Warranty* (Seams & Materials) | 2-Year | 3-Year |
| Reinforced Heavy-Duty, Tear Resistant PVC | 25 oz. 700 Denier | 28 oz. 1000 Denier |

*Full warranty details may be found online at <https://epicoutdoorcinema.com/warranty>.



EPIC SHOWCASE A/V CONSOLE COMPARISON



EPIC's ShowCase™ Audio-Video Consoles are pre-wired and pre-labeled for easy operation with no AV experience necessary. Just plug and play!

This comparison sheet is a tool to help you compare our DIGITAL, PRO and PREMIER DIGITAL ShowCase™ Consoles.

DIGITAL CONSOLE



EPIC's DIGITAL ShowCase™ Audio Video Console:

- Professional audio mixer w/Bluetooth™ connection
- Wireless microphone & wired backup microphone
- Auxiliary 1/8" input for projector audio, MP3 or laptop
- Pre-wired & pre-labeled for easy operation
- Drawer stores mics & rechargeable magnetic light
- Left & right stereo speaker XLR output
- Does not include a Blu-ray/DVD player

PRO CONSOLE



EPIC's PRO ShowCase™ Audio Video Console:

- Professional audio mixer w/Bluetooth™ connection
- Wired microphone
- Auxiliary 1/8" input for projector audio, MP3 or laptop
- Pre-wired & pre-labeled for easy operation
- Consumer Blu-ray/DVD player
- LCD preview monitor to cue up Blu-ray movie
- LED work light with remote

PREMIER DIGITAL CONSOLE



EPIC's PREMIER DIGITAL ShowCase™ Audio Video Console:

- Pairs our PRO & DIGITAL console to include digital & analog media operation from a single unit
- Professional audio mixer w/Bluetooth™ connection
- Professional Blu-ray player with advance control
- Dual 7" LCD preview monitors for cueing up Blu-ray & Digital movies from a laptop or iPad™ (not included)
- Wireless microphone & wired backup microphone
- Auxiliary 1/8" input for projector audio, MP3 or laptop
- Pre-wired & pre-labeled for easy operation
- Drawer stores mics & rechargeable magnetic light
- Left & right stereo speaker XLR output

WHY GO EPIC?

Product Details

Why Choose Epic? Tailored Solutions for Every Audience and Venue

At Epic Outdoor Cinema, we understand that each event is unique. That's why we offer customized cinema solutions tailored to fit your specific audience size, venue requirements, and more. Whether you're hosting a cozy movie night in the park or a large outdoor festival, our diverse product range allows you to select the perfect screen and system setup to enhance your viewer's experience.

Shop with confidence knowing that each Epic product is designed with versatility and quality in mind. From compact screens ideal for intimate gatherings to large-scale models for thousands of viewers, our selection process helps you identify the best fit based on your venue's dimensions, audience size, and viewing conditions.

Go Epic and experience the ease of finding the right outdoor cinema solution, no matter the scale or setting!





WHY #GOEPIC?



UNIQUE FEATURES

Professional grade, patented screens are unmatched in the industry for quality & performance:

- screen Insta-flates™ in under 10 minutes
- silent operation
- sealed-air frame free-standing design
- machine washable dual vista surfaces
- withstand winds up to 25 mph
- versatile front or rear projection



WE'RE IN FLORIDA

EPIC Screens are designed, built, & assembled in our South Florida facility making repairs for accidental damages or replacement surfaces just a call away.



EASE OF USE

One person can easily set up and transport our complete system in any van or truck

AUDIENCE UP TO 350



E-SL16 PRO

SCREEN-ONLY KIT

Our most popular size screen for parks, as well as hotels & resorts

E-SLP16 PREMIER

SCREEN-ONLY KIT

Premium air pump makes set up & take down a breeze. Highest quality materials & surface, floats on water

SC-SLC16 PRO

COMPLETE CINEMA SYSTEM

Host a movie in a park, field or amphitheater. If weather is an issue, this screen size can be easily moved inside

SC-SLC16 PREMIER

COMPLETE CINEMA SYSTEM

AV consoles are pre-wired & pre-labeled for easy operation, includes fastest air pump & case for projector



WHY #GOEPIC?



UNIQUE FEATURES

Professional grade, patented screens are unmatched in the industry for quality & performance:

- screen Insta-flates™ in under 10 minutes
- silent operation
- sealed-air frame free-standing design
- machine washable dual vista surfaces
- withstand winds up to 25 mph
- versatile front or rear projection



WE'RE IN FLORIDA

EPIC Screens are designed, built, & assembled in our South Florida facility making repairs for accidental damages or replacement surfaces just a call away.



EASE OF USE

One person can easily set up and transport our complete system in any van or truck

AUDIENCE UP TO 500



E-SL20 PRO

SCREEN-ONLY KIT

Popular for “movies in the park” & poolside dive-ins for hotels & resorts

E-SLP20 PREMIER

SCREEN-ONLY KIT

Premium air pump makes set up & take down a breeze. Highest quality materials & surface, floats on water

SC-SLC20 PRO

COMPLETE CINEMA SYSTEM

Host a movie in a park, field or amphitheater. If weather is an issue, this screen size can be easily moved inside

SC-SLP20 PREMIER

COMPLETE CINEMA SYSTEM

AV consoles are pre-wired & pre-labeled for easy operation, includes fastest air pump & case for projector



WHY #GOEPIC?



UNIQUE FEATURES

Professional grade, patented screens are unmatched in the industry for quality & performance:

- screen Insta-flates™ in under 10 minutes
- silent operation
- sealed-air frame free-standing design
- machine washable dual vista surfaces
- withstand winds up to 25 mph
- versatile front or rear projection



WE'RE IN FLORIDA

EPIC Screens are designed, built, & assembled in our South Florida facility making repairs for accidental damages or replacement surfaces just a call away.



EASE OF USE

One person can easily set up and transport our complete system in any van or truck

AUDIENCE 500 - 800



E-SLP25 PREMIER

SCREEN-ONLY KIT

Impress audiences of all sizes with the massive 28ft diagonal picture

E-SLP40 PREMIER

SCREEN-ONLY KIT

Host an epic blockbuster drive-in movie with our largest screen with a cinemascope 43ft diagonal picture

SC-SLC25 PREMIER

COMPLETE CINEMA SYSTEM

Includes everything you need-screen, audio-video equipment, hard case for projector, accessories & transport cart

SC-SLC40 PREMIER

COMPLETE CINEMA SYSTEM

AV consoles are pre-wired & pre-labeled for easy operation, includes fastest air pump & case for projector



Ready to Transform Your Viewing Experience?

As you reach the end of our catalog, we hope you are inspired to elevate your cinema setup. At Epic Outdoor Cinema, we are dedicated to providing you with not just products, but experiences that bring people together under the stars. Our commitment to quality, innovation, and customer satisfaction sets us apart, ensuring that every movie night, sports game, or outdoor presentation you host is nothing short of spectacular.

Don't wait to make your next event unforgettable. Contact us today to discuss your needs, explore our solutions, and discover how going Epic can redefine your entertainment experience. Our team is ready to assist you in selecting the perfect system that not only meets but exceeds your expectations.

Call or email us now, and let's bring the magic of cinema right to your doorstep.

Go Epic — where every screening is an event to remember.



GET IN TOUCH WITH US!



team@epicoutdoorcinema.com



+888-699-EPIC (3742)



www.epicoutdoorcinema.com

SHIPPED WORLDWIDE

4051 SW 47 STREET, STE #103, Fort Lauderdale, FL 33314

